

TATLER

October 2025

ROYAL TEA
THE SECRET
POLITICS OF
BUCKINGHAM
PALACE

GOOD
MANORS?
FROM HOUSES
TO HOSTING,
HOW TO BE THE
ENVY OF ALL

FAREWELL DOWNTON

ELIZABETH MCGOVERN SAYS GOODBYE
TO THE COUNTESS OF GRANTHAM



HELENE HAMANSEN JEWELLERY



Helene Hamansen Jewellery was born from a desire to unite beauty, quality, and affordability in every creation. Bridging the gap between fashion and fine jewellery, the Swiss-Norwegian brand's demi-fine pieces embody a modern sense of luxury, delightfully adding a touch of elegance to every movement. Visit www.helenehamansen.com and follow @helenehamansenjewellery on Instagram.



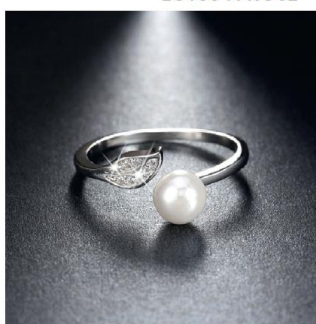
ALLURE ACCESSORIES



Allure Accessories is inspired by the beauty of rural, agricultural life - reflected by the brand's ethically sourced, hypoallergenic jewellery crafted for exceptional quality. Their small, family-run business pours

a genuine love for the countryside into every piece they create, bringing warmth, authenticity and charm to each design. Visit allure-accessories.com and follow them @allurebraceletdesign on Instagram.

LOTUS N ROSE



Lotus N Rose crafts timeless silver jewellery with intention and elegance. Each piece is consciously designed to celebrate individuality, blending minimalist beauty with enduring quality.

Wearable every day, treasured forever. Sophistication meets sustainable, slow-made craftsmanship. Visit lotusnrose.com and follow @lotusnroselondon on Instagram.

GOLDANDSTONES BY GAYLE



Highly coveted by discerning collectors, GoldandStones by Gayle's Birthday Collection is a masterclass in wearability and lasting craftsmanship. Rooted in a classic silhouette and reimagined through Gayle's distinctive eye - elevated gold weight, natural diamonds, and confident sculptural curves - the result is a modern cult favourite, now sought after by the world's

most influential jewellery connoisseurs. Visit mygoldstones.com and follow @goldandstones on Instagram.

TATLER AT HOME

1. **Jean Hart Commissioned Art** is known for her captivating photorealistic pencil drawings and evocative fine art, bringing remarkable detail and emotion to every piece. She also explores expressive ink line drawings through her ongoing 'I Can See...' collection - an abstract series with a unique layer of intrigue and sophistication. Visit jeanhartcommissionedart.co.uk and follow @jeanhart_ca on Instagram.

2. The Day Bed Sofa by **Nader Gammas**. For sitting or reclining. Using only the highest quality beech wood and French leather, it is offered in different patinas. For enquiries, visit nadergammass.com and follow @nader_gammass on Instagram. Representation by studiotwentyseven.com

3. At **I&Co**, creative director Isabel Lankester designs bold, playful, and timeless furniture in-house. Each handcrafted piece blends classic silhouettes with modern details - honoring English tradition while embracing contemporary style. Designs are fluid, tactile, and meticulously finished. Photo by Freya Llewellyn-Smith. Discover more at www.isabeland.co and @isabeland.co on Instagram.

4. **Majo Portilla**, an internationally acclaimed artist based in The Netherlands, creates vibrant works rooted in her Latin heritage. Fusing abstract, contemporary, and figurative styles, her paintings exude emotional depth and meaning. Visit majoportilla.art for updates on her art and follow @majoportillaart on Instagram for more.

5. Launched in 2023, **Samson & Solomon Candle Co** is quickly growing into an inspiring e-commerce brand for soy wax candles and fragrances that inspire the home. Created and handcrafted by Tali Butler, the brand is expanding to include diffusers, candle care kits and accessories, and ships worldwide. Visit www.samsonandsolomoncandleco.com.au and follow @samsonandsolomoncandleco on Instagram.

6. **LAMPSHADES BY SISSI** evokes timeless elegance through handcrafted Victorian-style lampshades. Each piece is delicately created in her woodland studio in Pennsylvania, USA, blending vintage charm with poetic craftsmanship. Bespoke creations are available upon request. Discover more at lampshadesbysissi.com and follow @lampshadesbysissi on Instagram.

7. Known for their luxury garden transformations, **MRLandscapes** blends design expertise with exceptional craftsmanship. Their recent Dukes Avenue, Chiswick project reflects their commitment to creating elegant, enduring outdoor spaces. Visit www.mrlandscapes.co.uk and follow @mrlandscapesuk on Instagram.

8. The **Douglas Watson Studio** offers high quality handmade and hand painted tiles using traditional techniques and a wide range of glazes, colours and styles. For more information, call 01491 629960 or visit www.douglaswatsonstudio.co.uk



